

What's in your mine?



Terrestrial Laser Scanning

Project Attributes

Project Type:
Open Pit Mine

Range:
4000 m (13,129 ft.)

Scan Positions:
4 scan positions

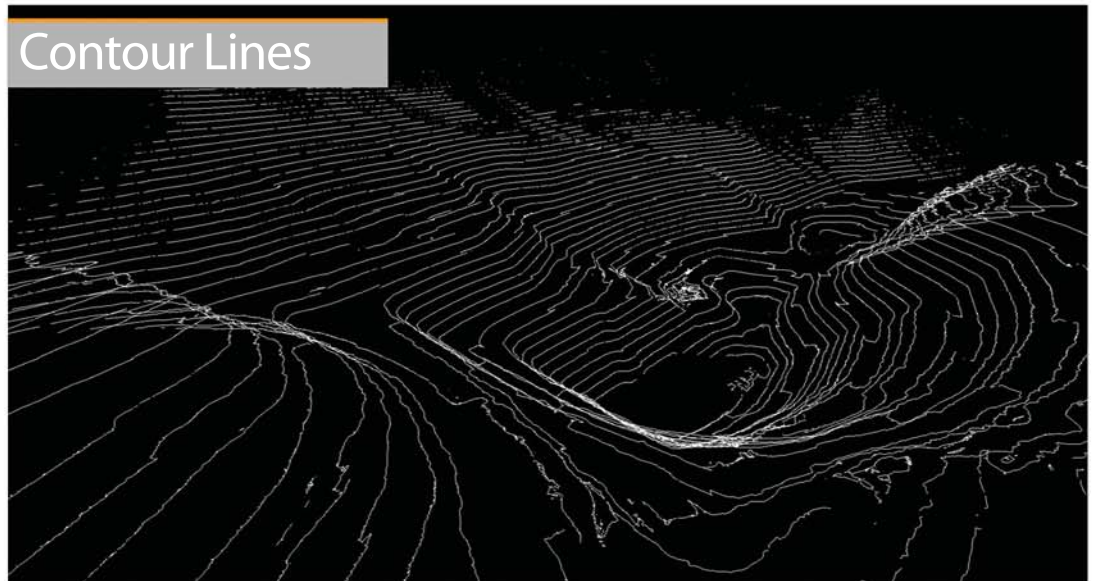
Processing Software:
RiMining

We're in their mines:

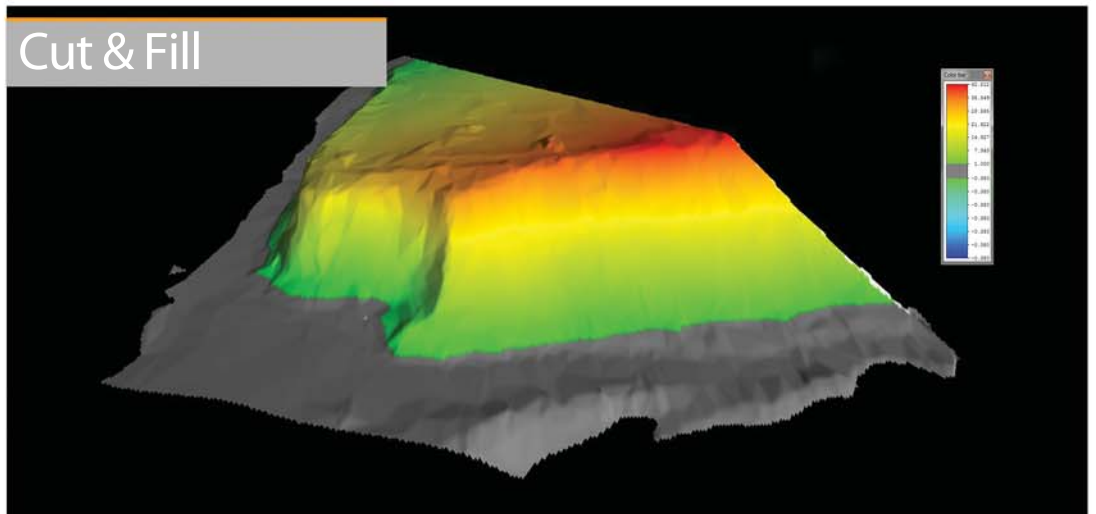
- Spring Creek Coal Mine
 - Cripple Creek
 - Potash Corp
- US Bureau of Mines
 - Empire Mines
 - Metso Minerals
- JCAC/ALCOA Sandow Mine
 - AllNorth
 - TCOR

This project was done with the RIEGL VZ-4000 3D laser scanner, along with integrated RTK to acquire data. The RIEGL VZ-4000 is a high precision 3D laser scanner capable of high speed data acquisition. VZ-Line Laser Scanner offers superior and unrivalled long range measurement performance of up to 4000 m reflectorless while still maintaining completely eye safe operation (Laser Class 1).

Contour Lines

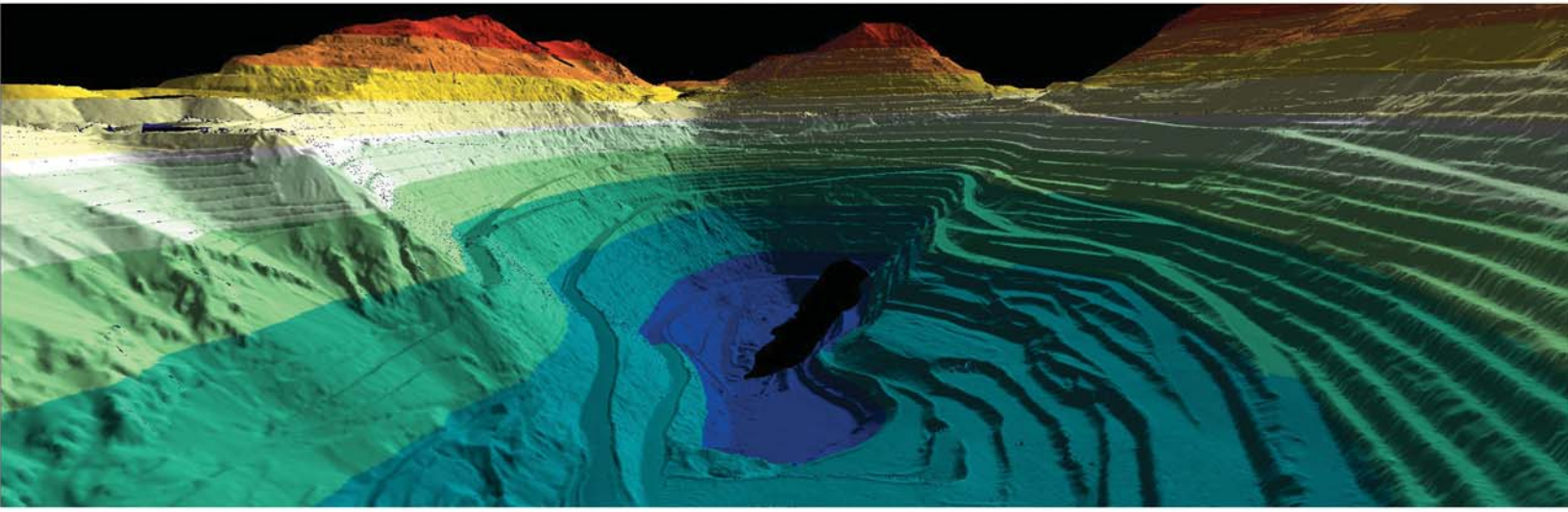


Cut & Fill



RIEGL USA, Inc | (855)-GO-RIEGLUSA
7035 Grand National Drive | Orlando, FL 32819
info@rieglusa.com | <http://www.rieglusa.com>



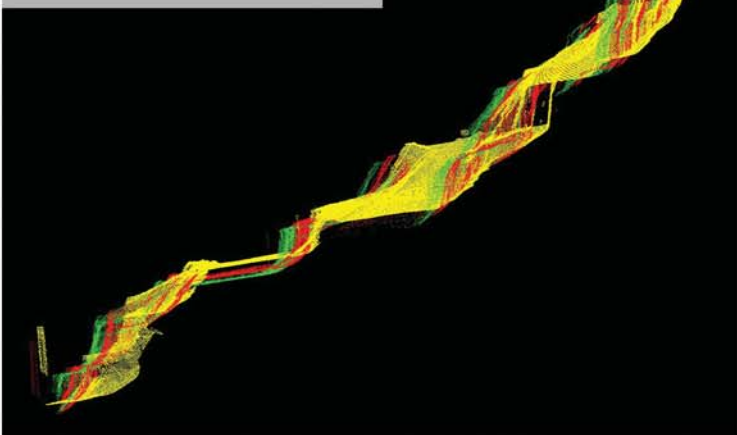


RiMINING

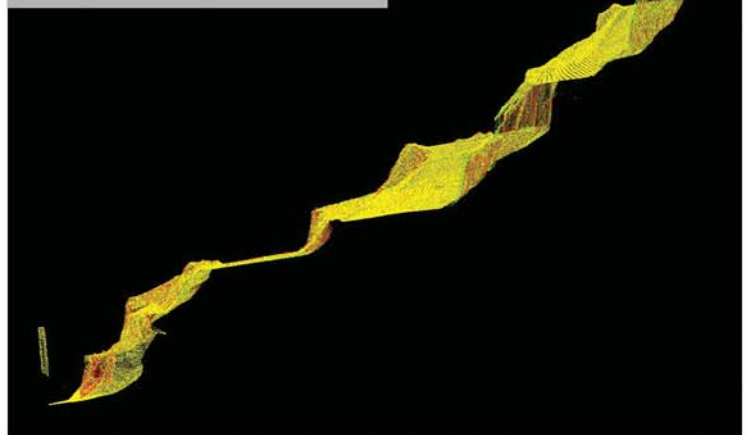
Processing Software
for Mining and
RIEGL VZ Scanners

RiMINING is designed to optimize and simplify scan data processing in open-pit mining. The focus of the software is on workflow simplification and automation. For advanced data-processing full compatibility with RiSCAN PRO is given. RiMINING allows field data import and registration without any targets speeds up field-surveying tremendously. RiMINING offers automatic registration, advanced filtering/elimination of vegetation, objects or outliers, Breakline detection and volume calculation are fully supported.

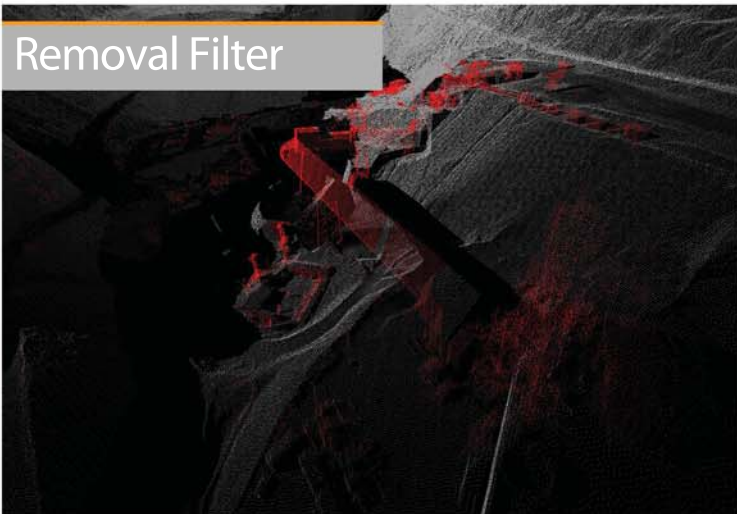
Unregistered Data



Registered Data



Removal Filter



Filter Applied

